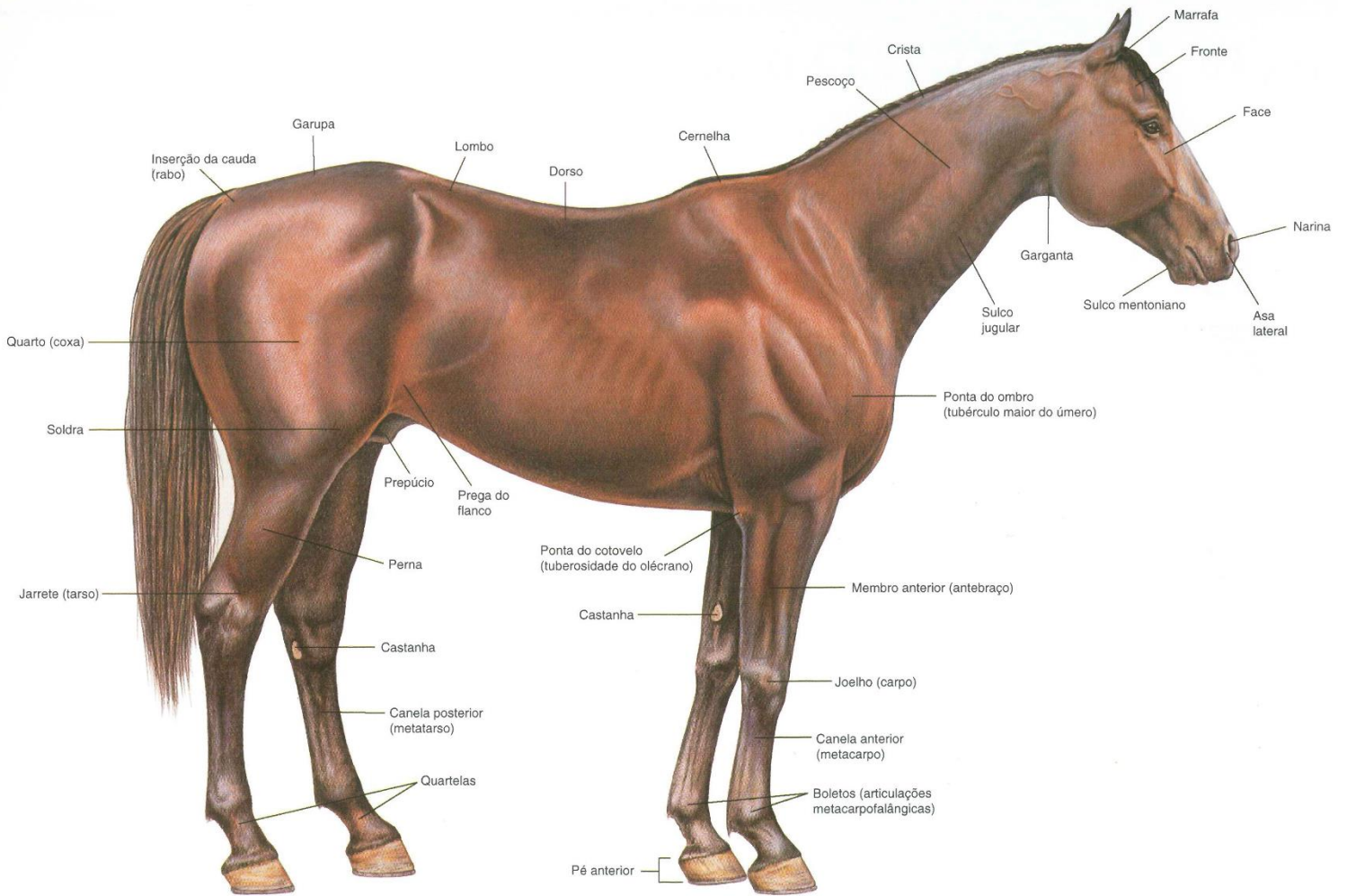
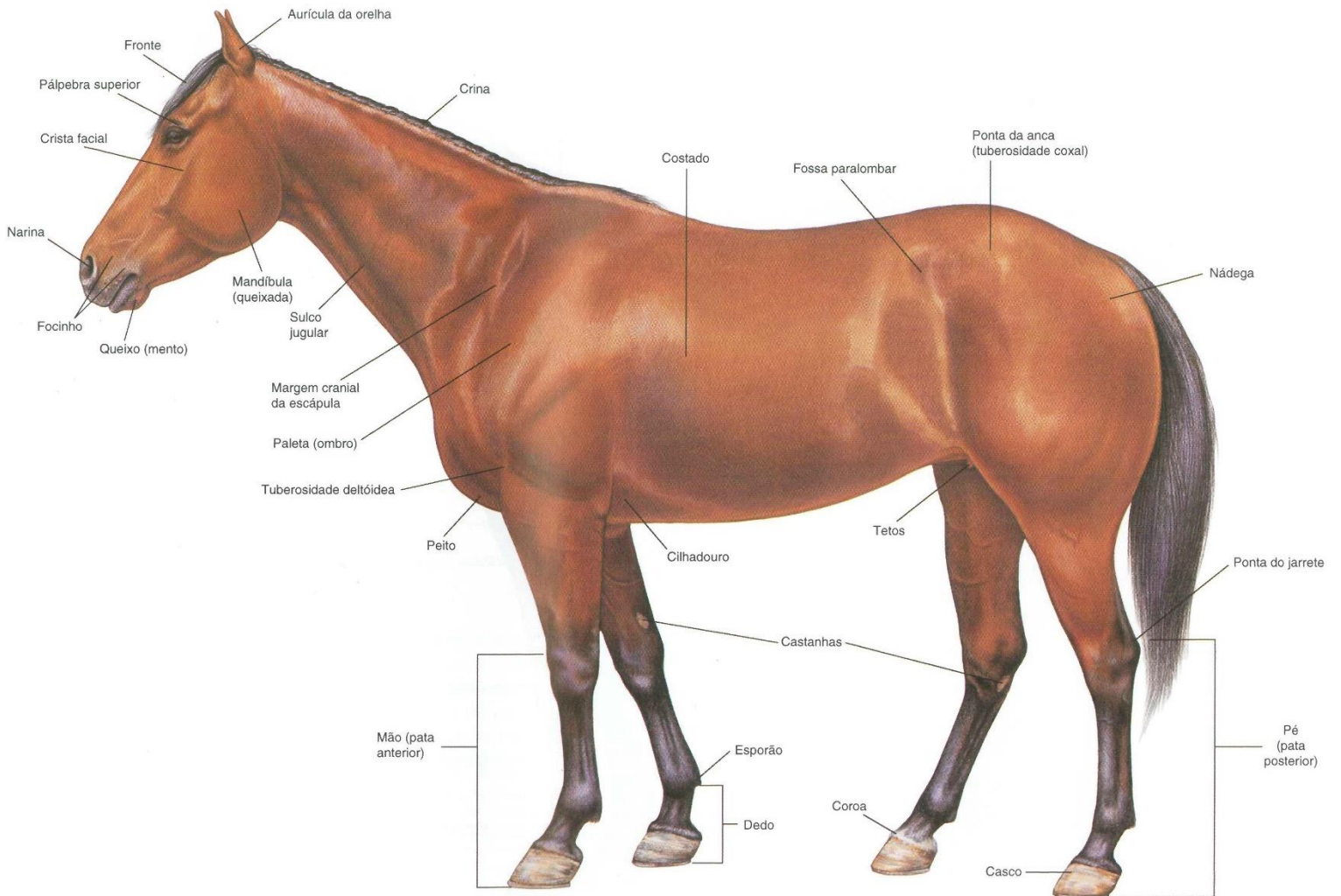


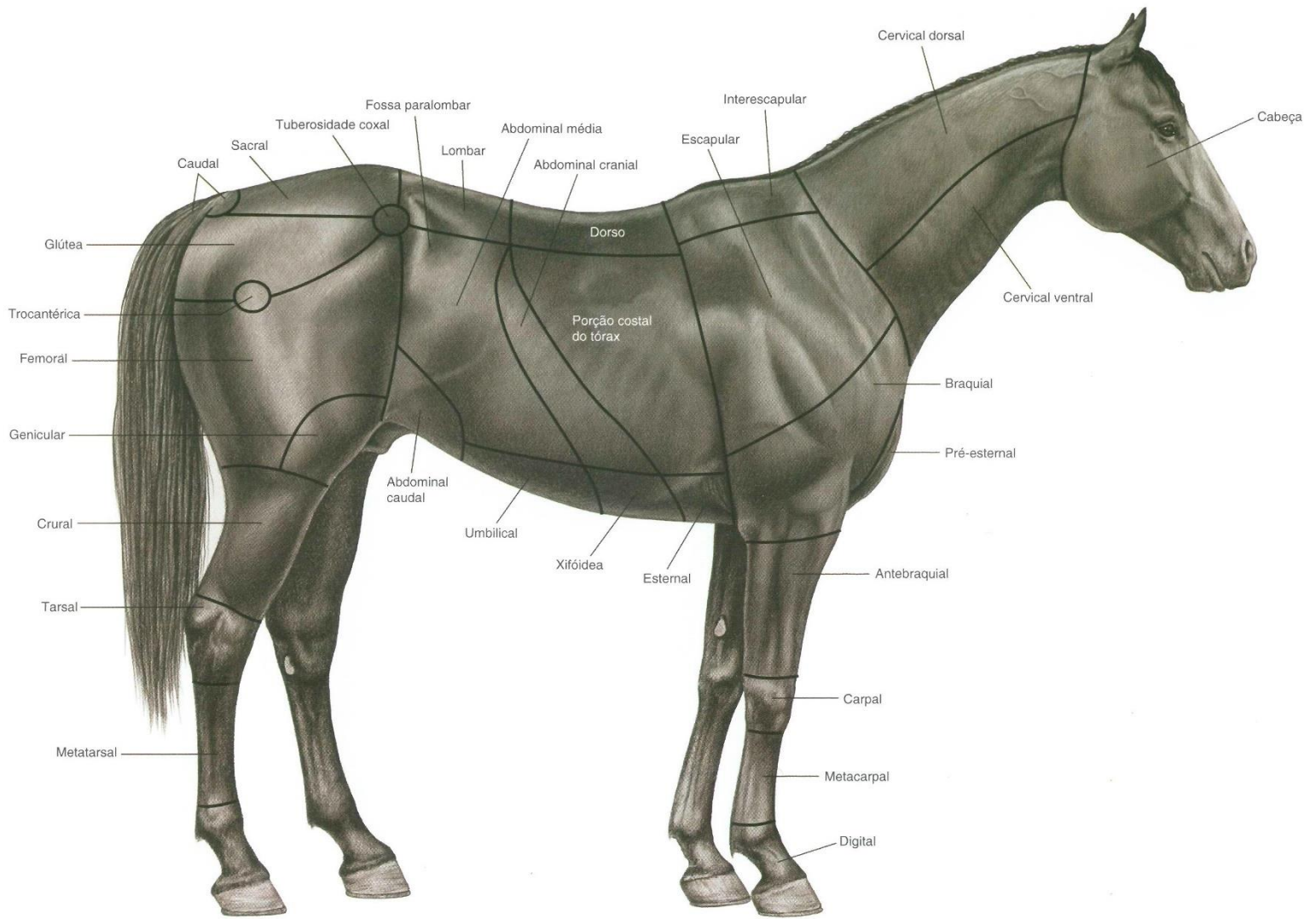
ATLAS

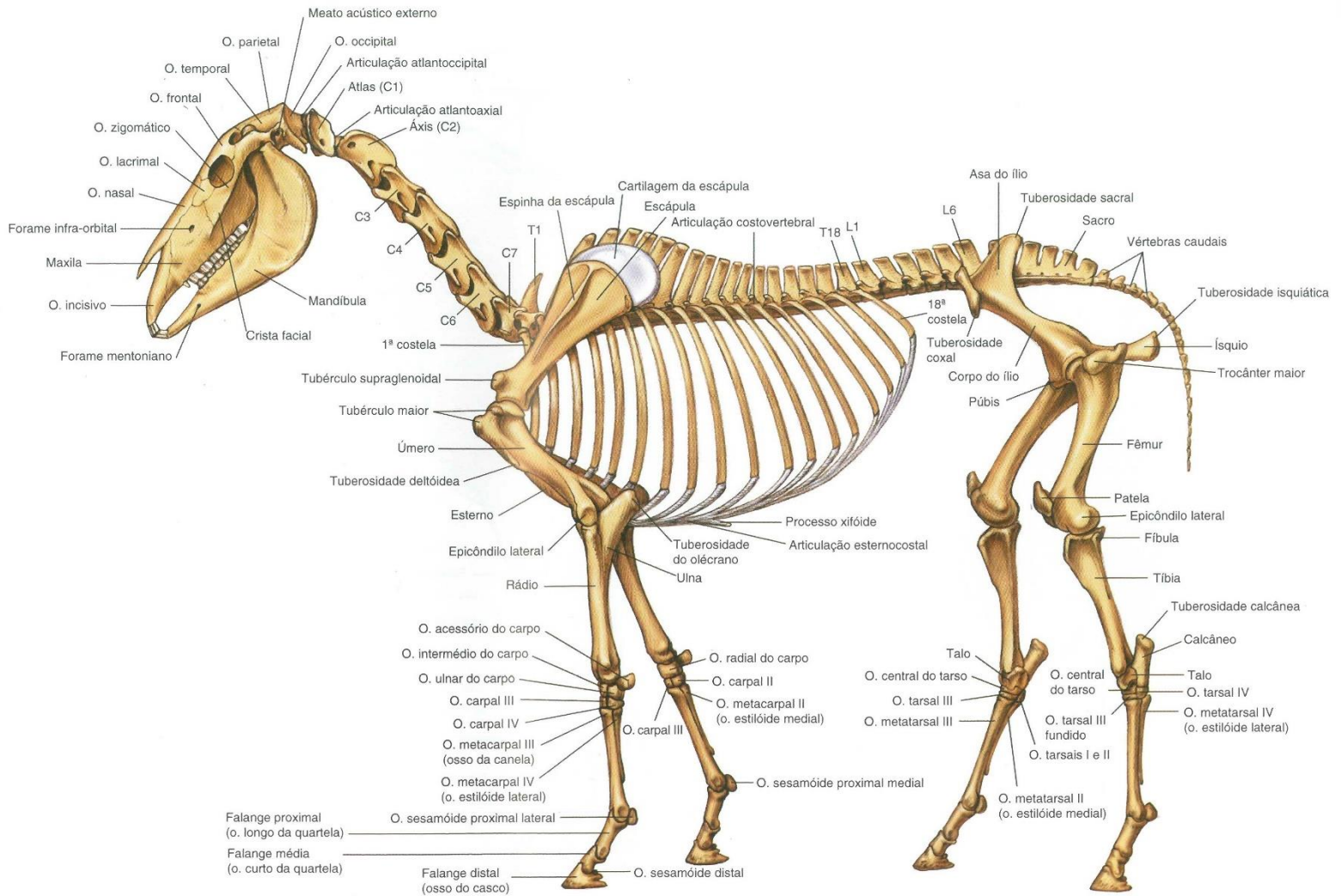
**ANATOMIA
DE EQUINOS**

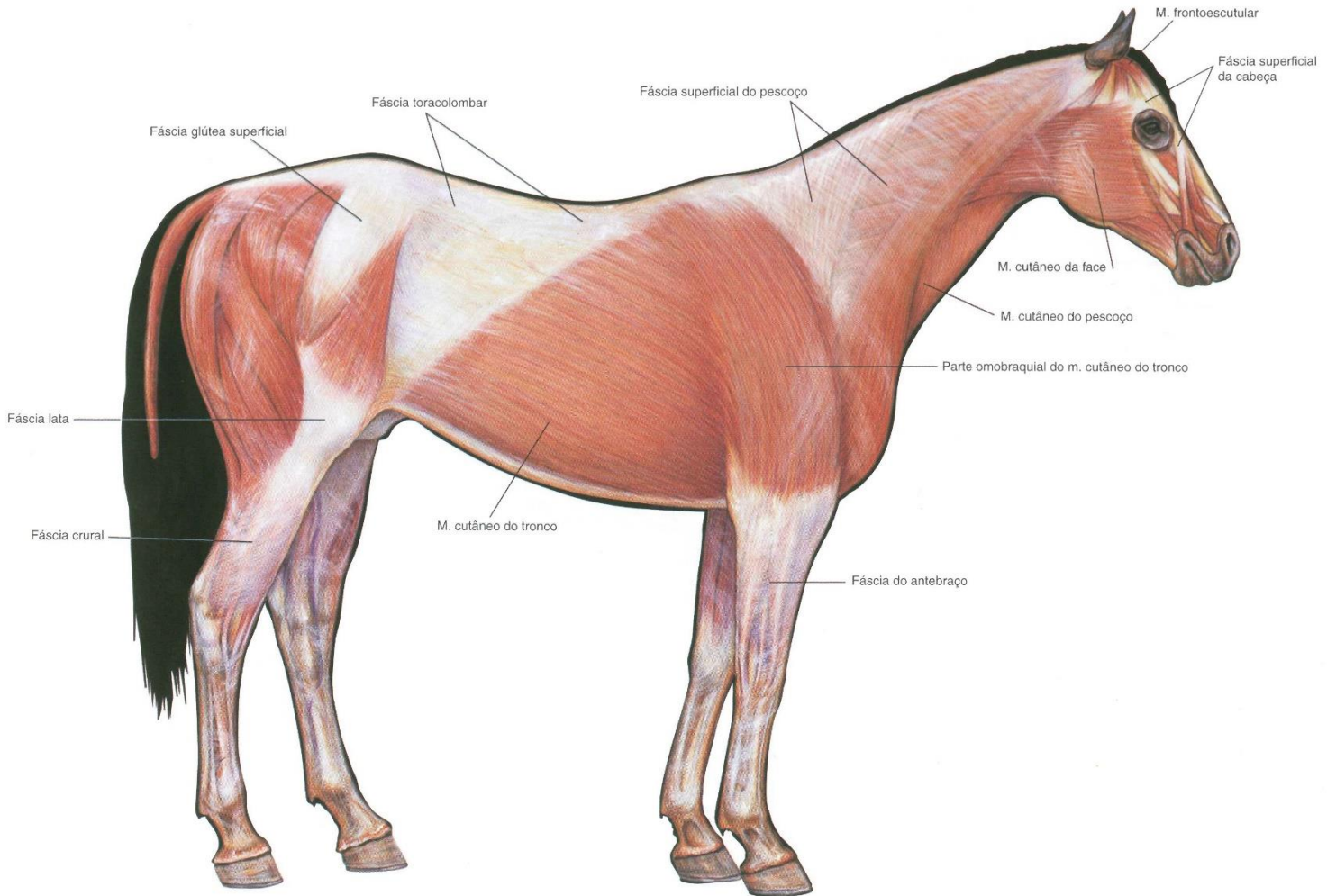
VETARQ.COM.BR

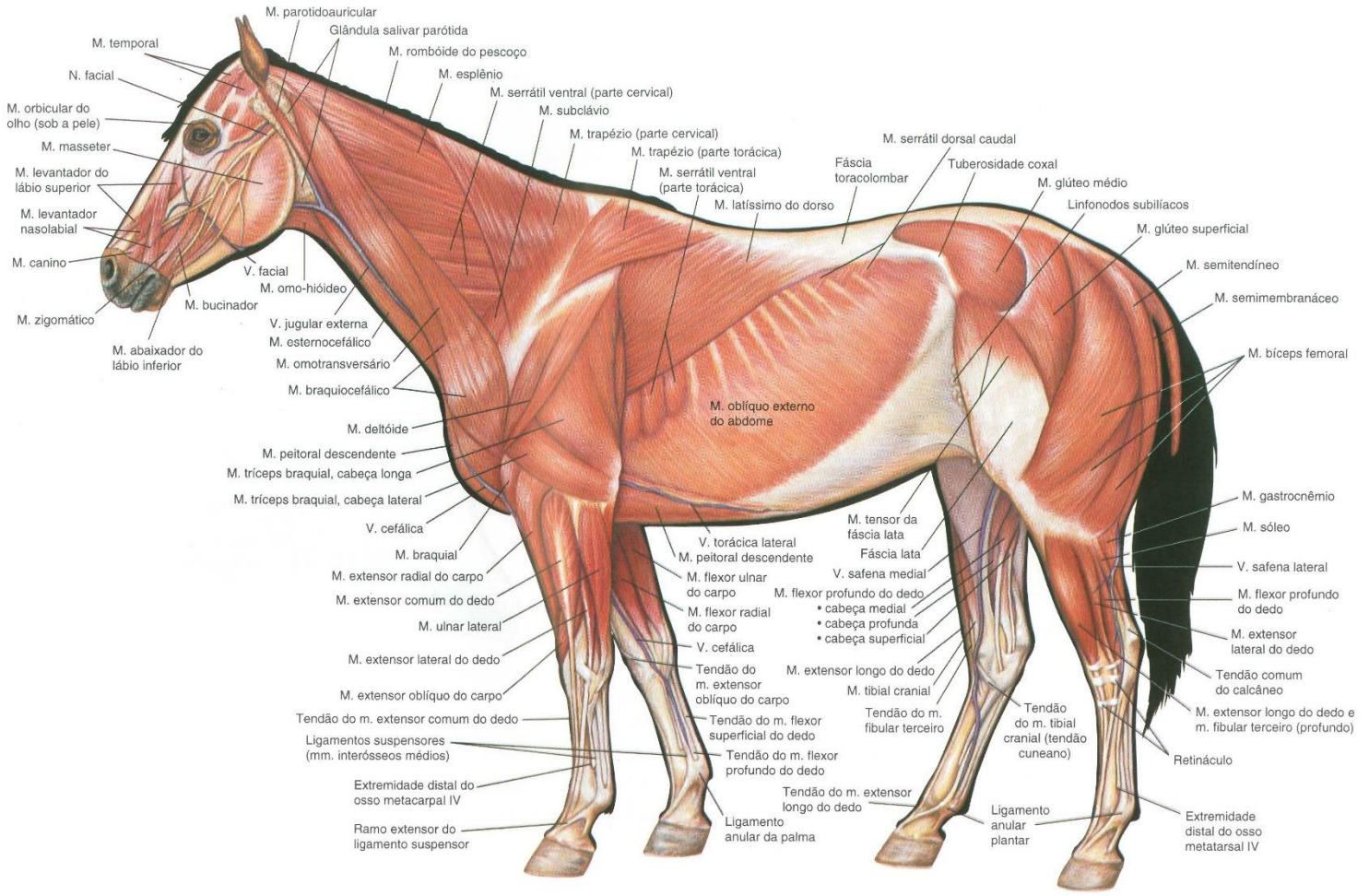




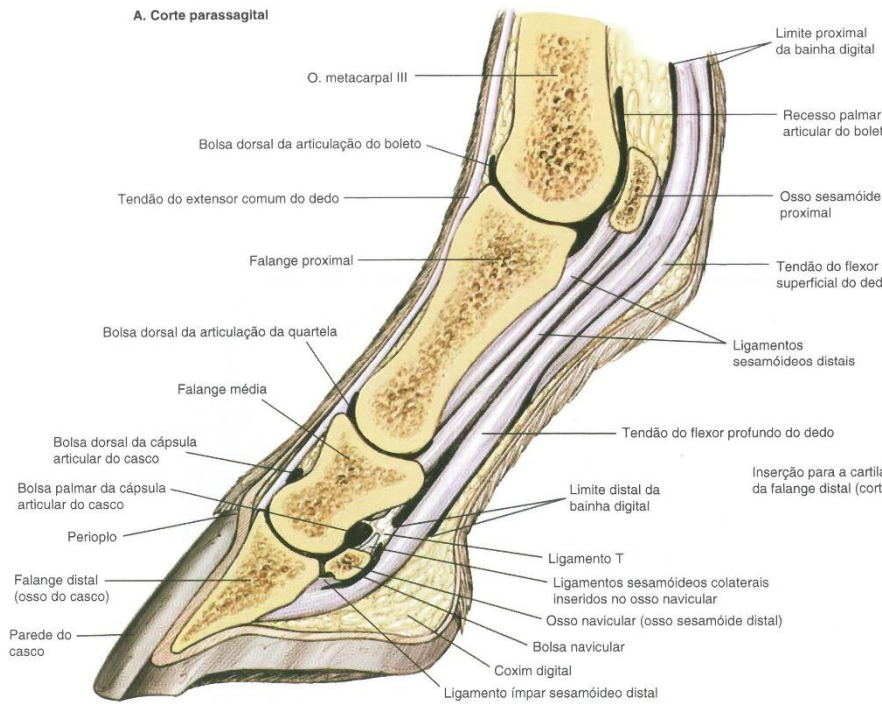




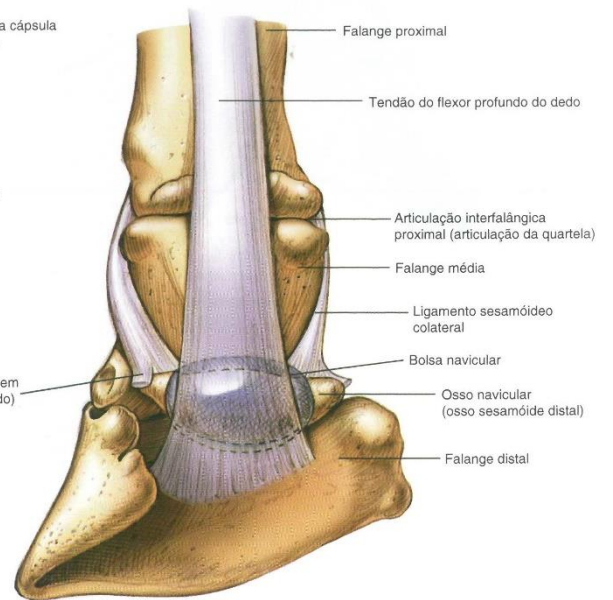


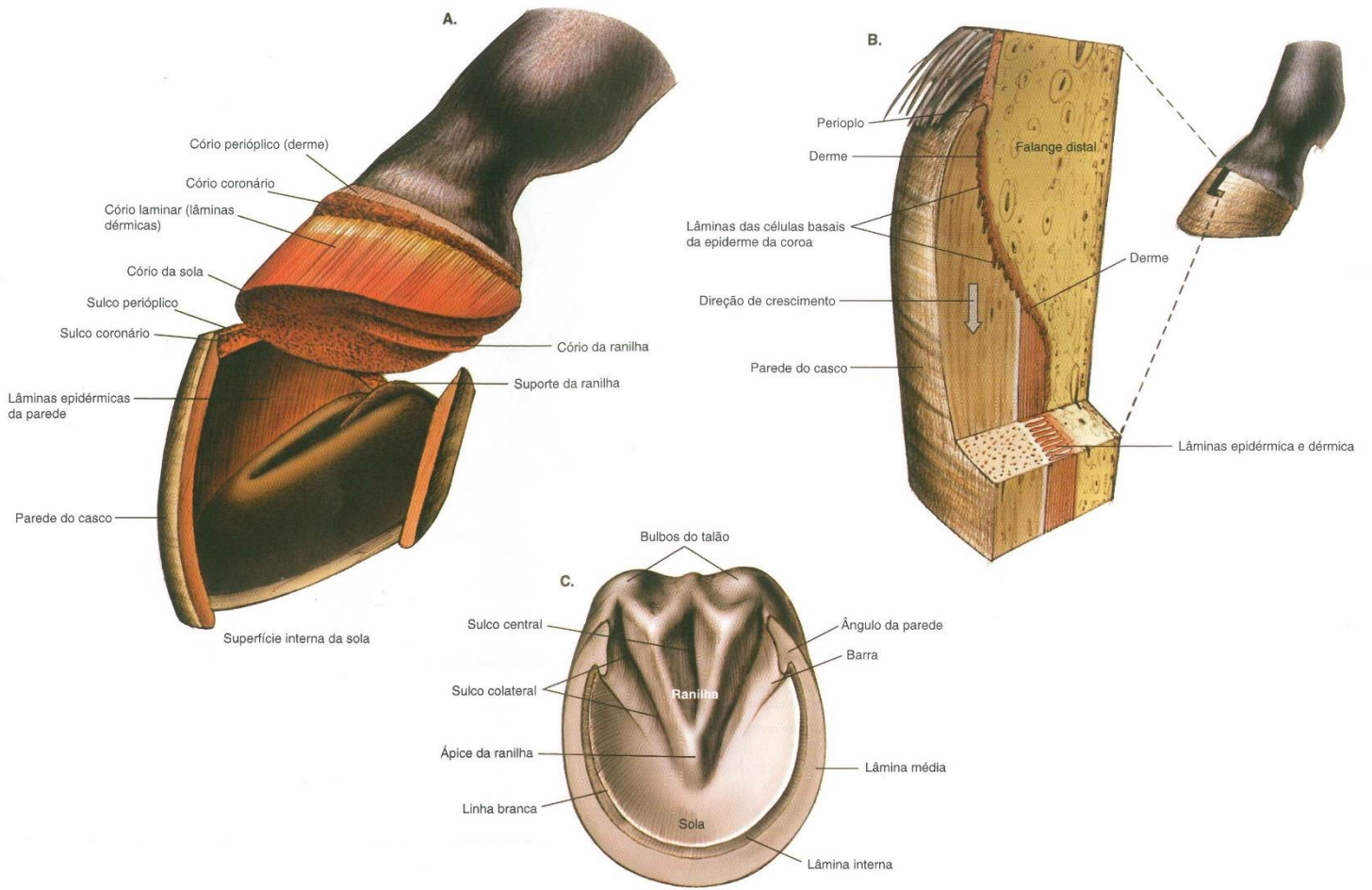


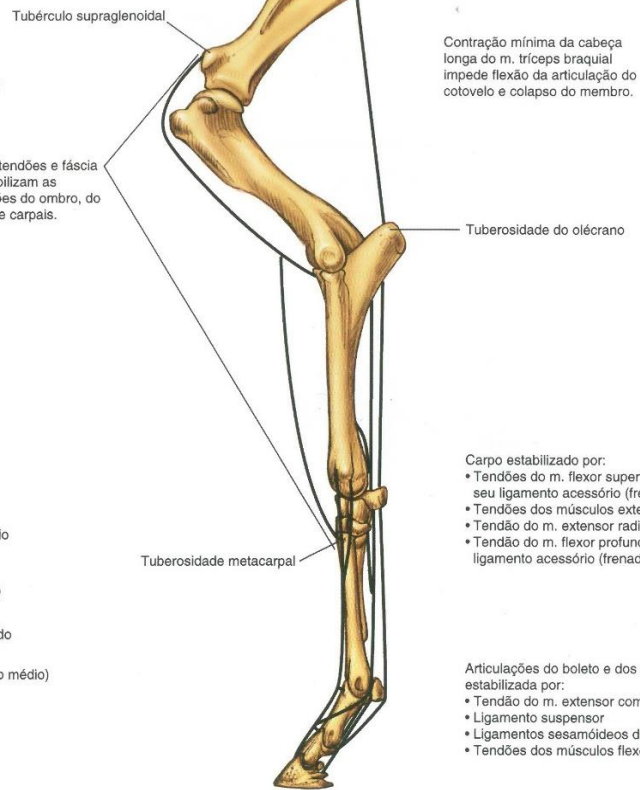
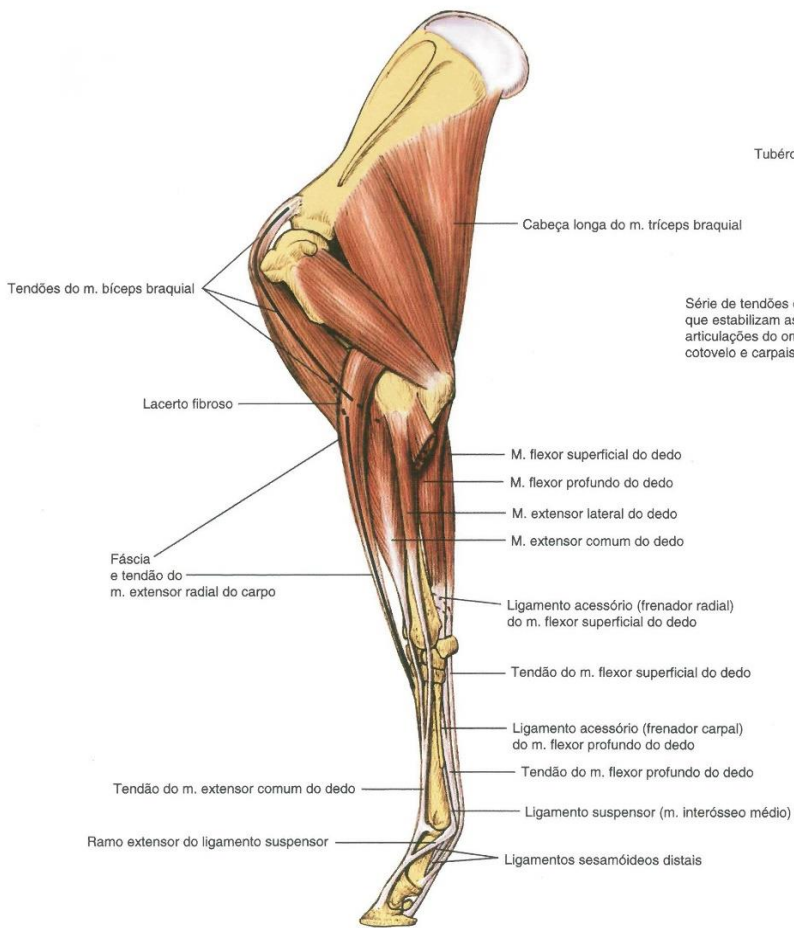
A. Corte parassagital



B. Vista palmar





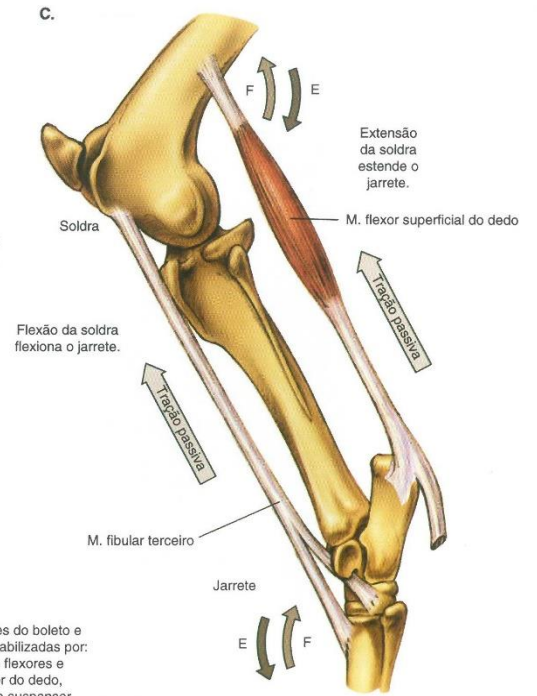
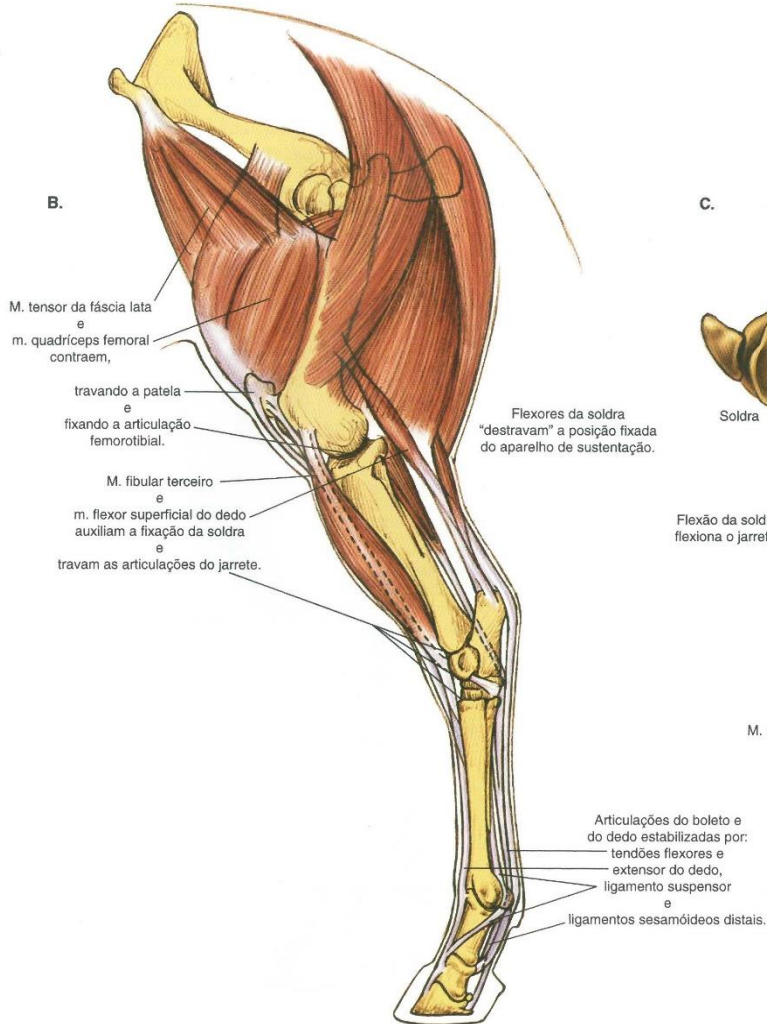


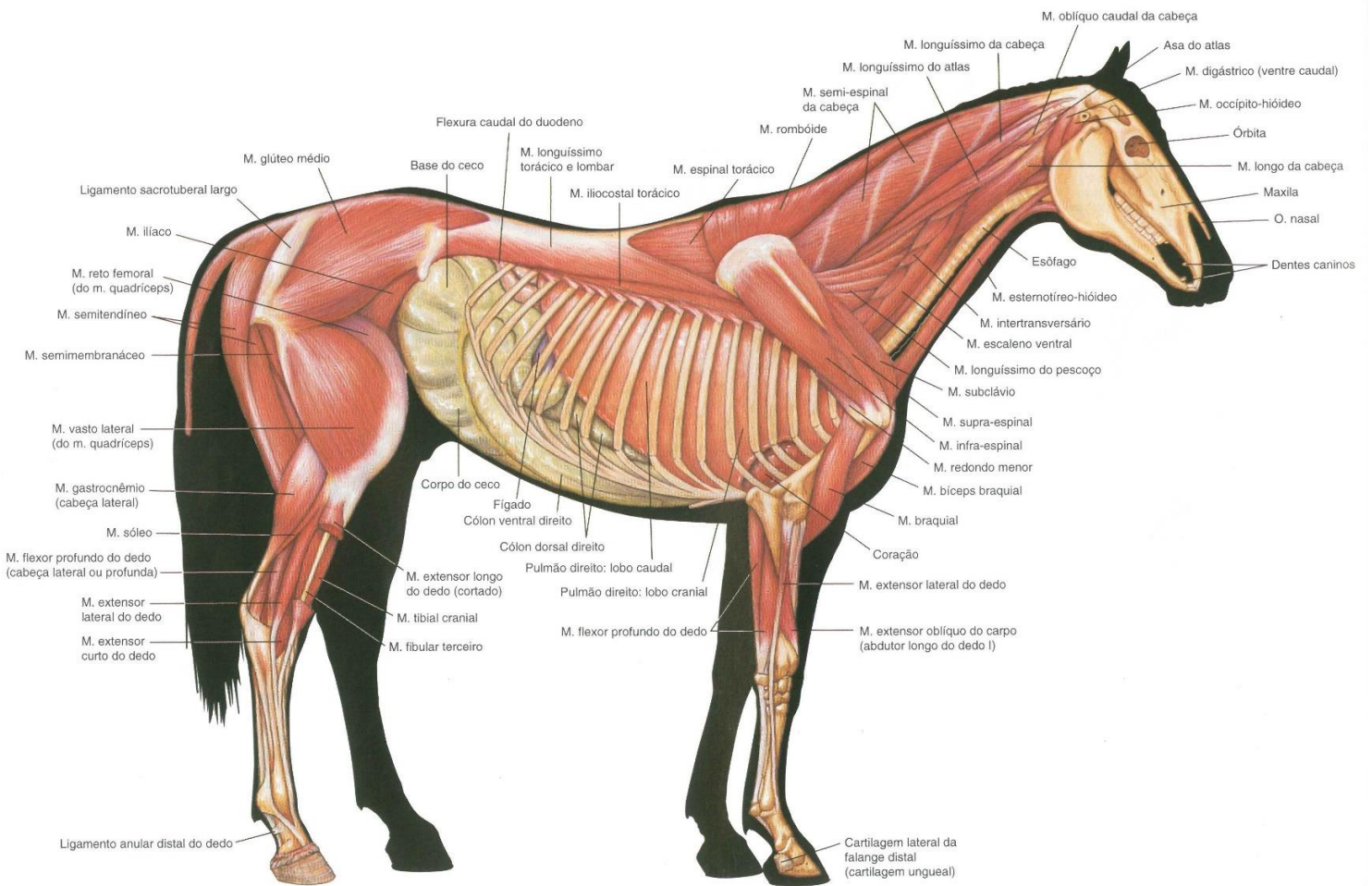
Carpo estabilizado por:

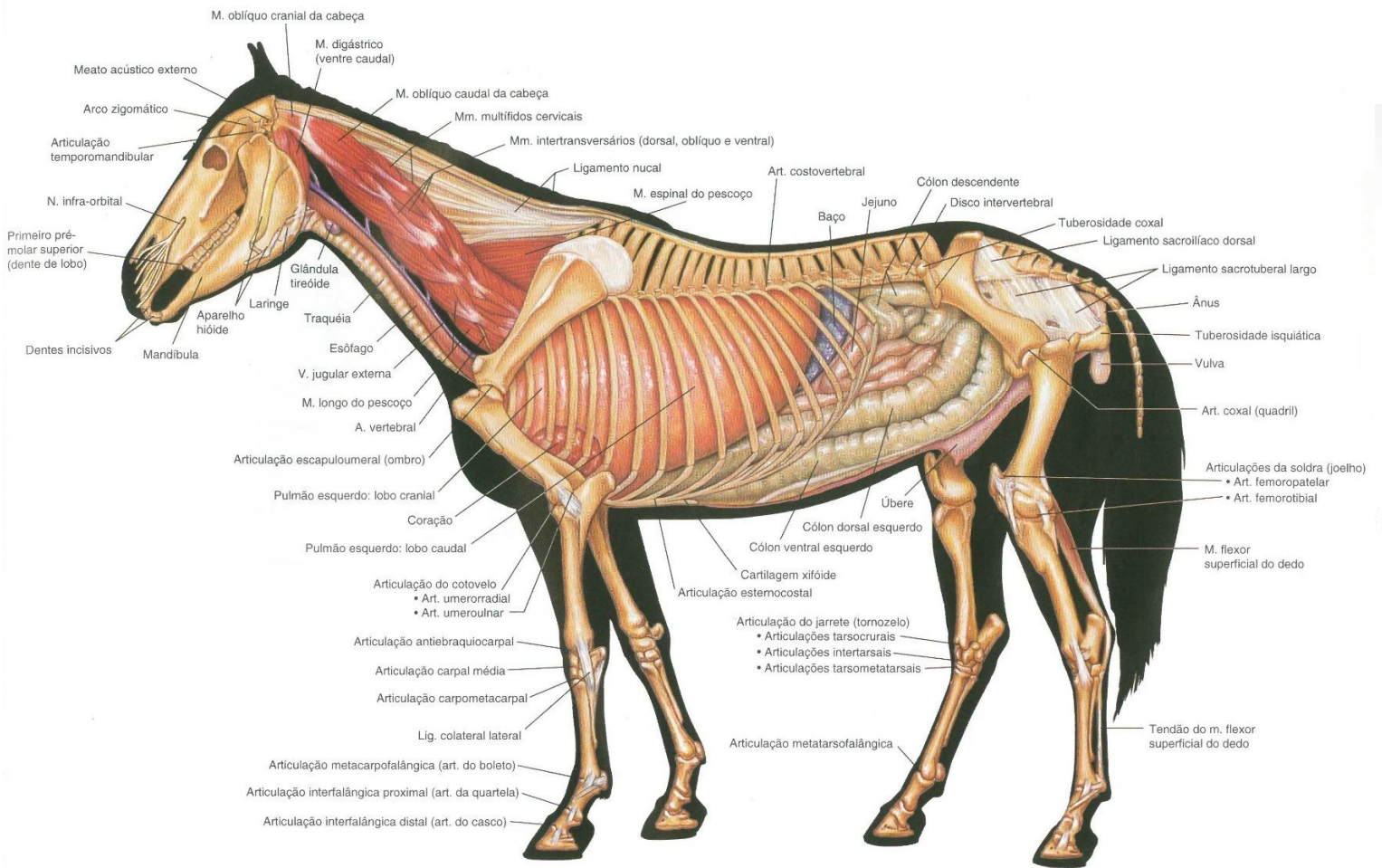
- Tendões do m. flexor superficial do dedo e seu ligamento acessório (frenador radial)
- Tendões dos músculos extensores do dedo
- Tendão do m. extensor radial do carpo
- Tendão do m. flexor profundo do dedo e seu ligamento acessório (frenador carpal)

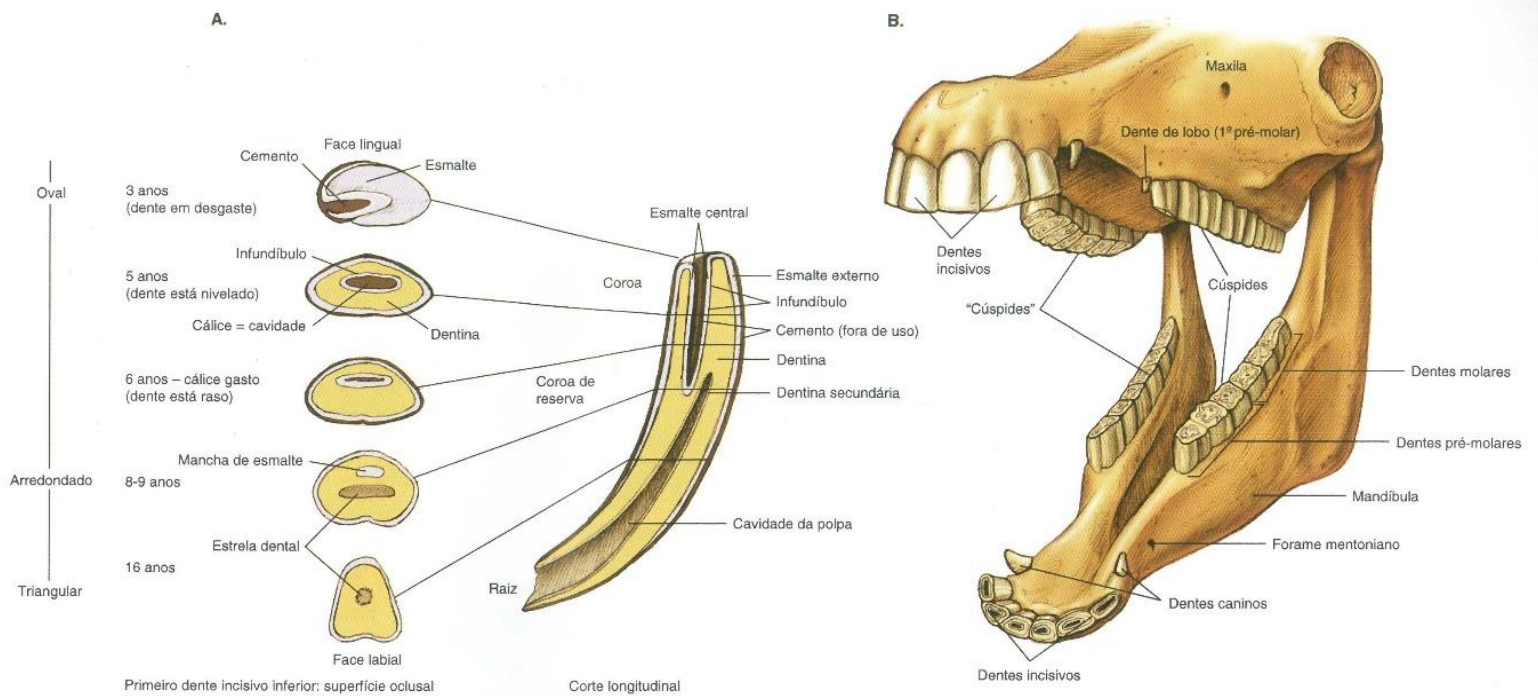
Articulações do boletão e dos dedos estabilizada por:

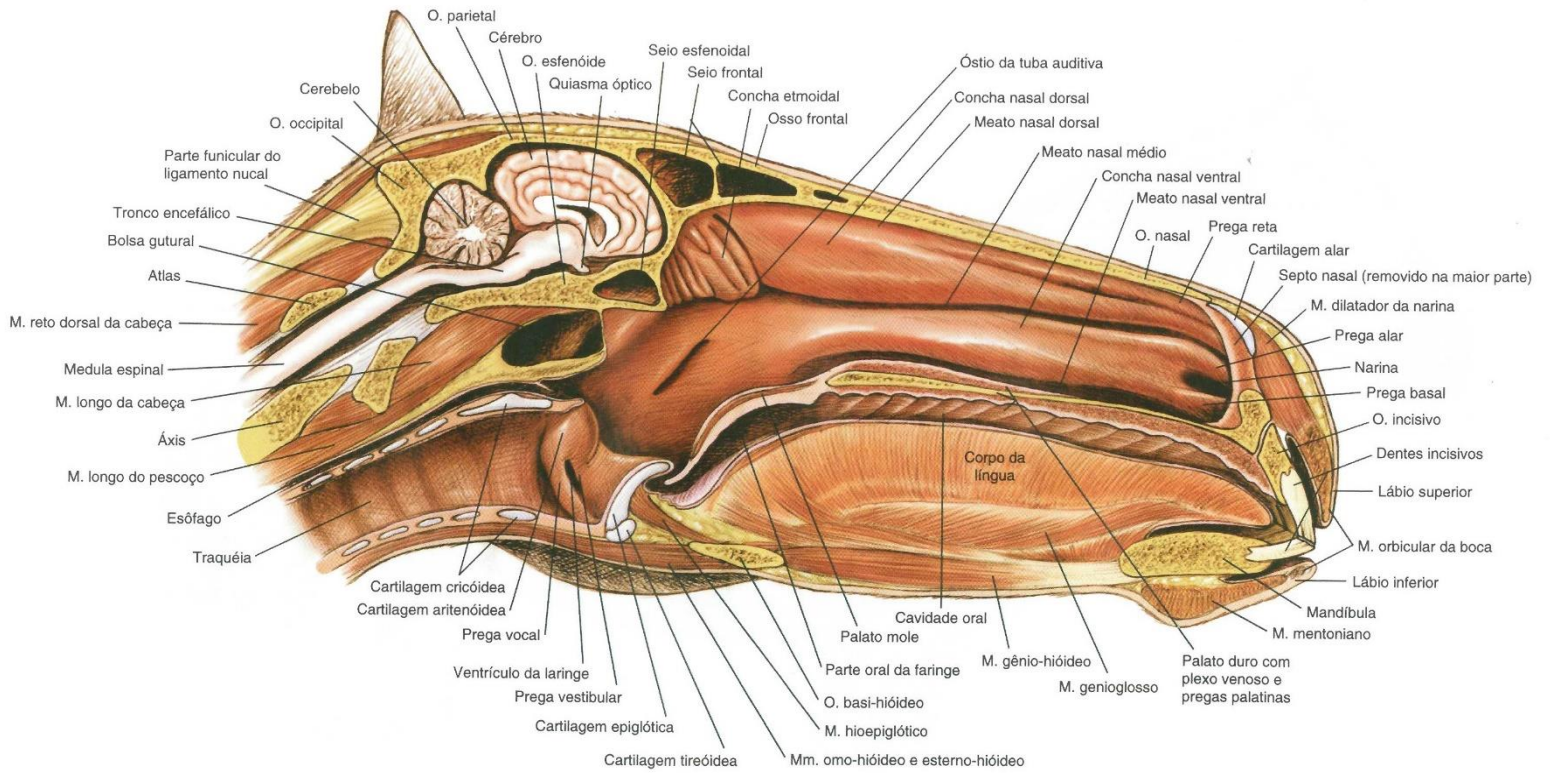
- Tendão do m. extensor comum do dedo
- Ligamento suspensor
- Ligamentos sesamóideos distais
- Tendões dos músculos flexores do dedo

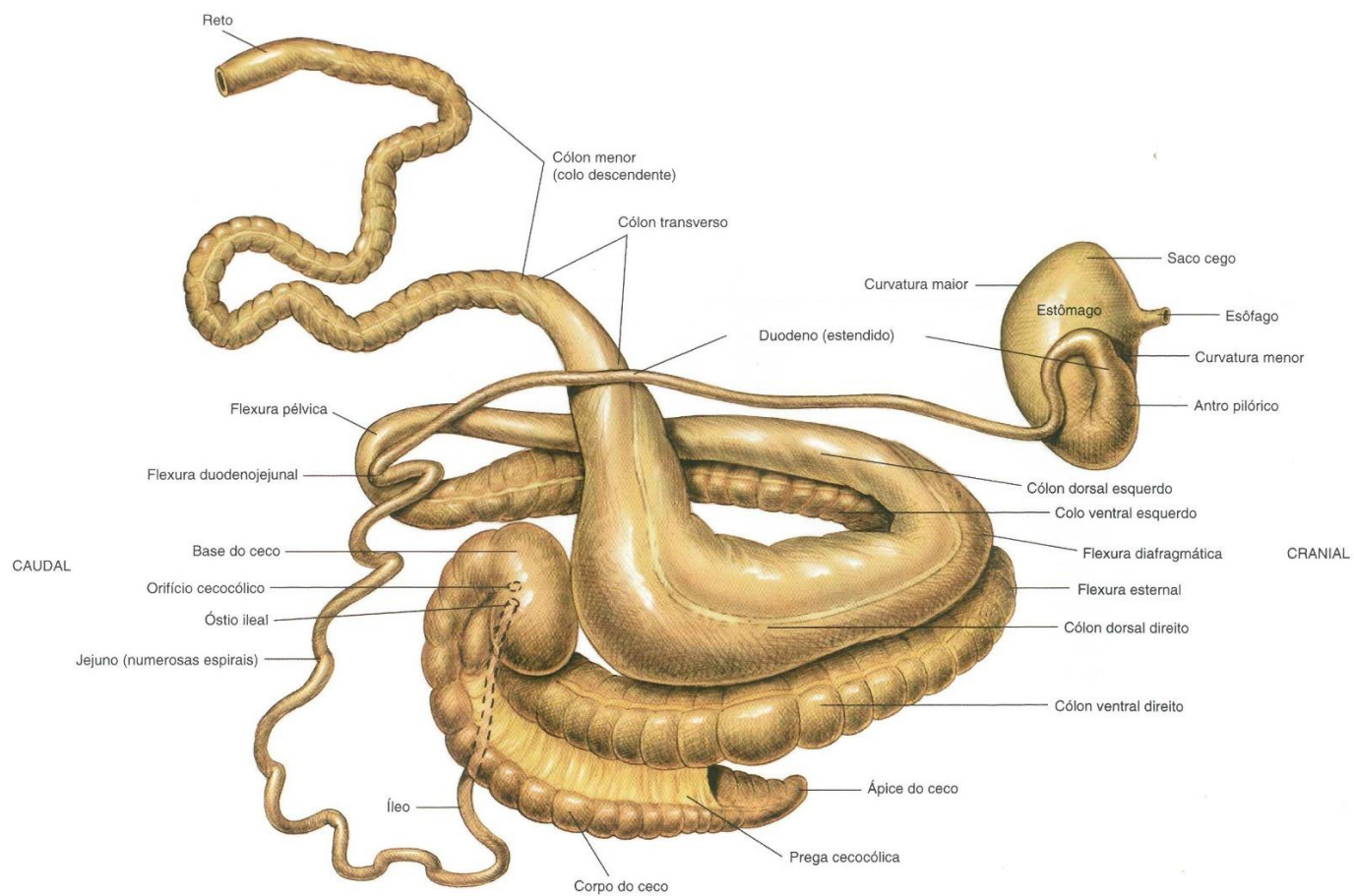




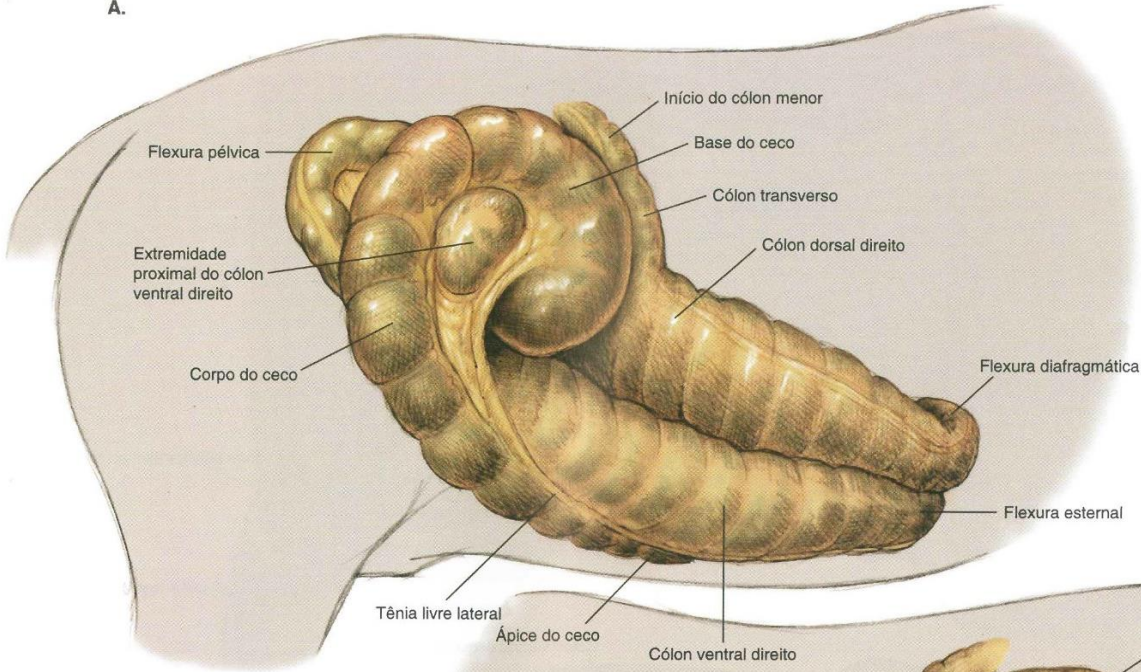




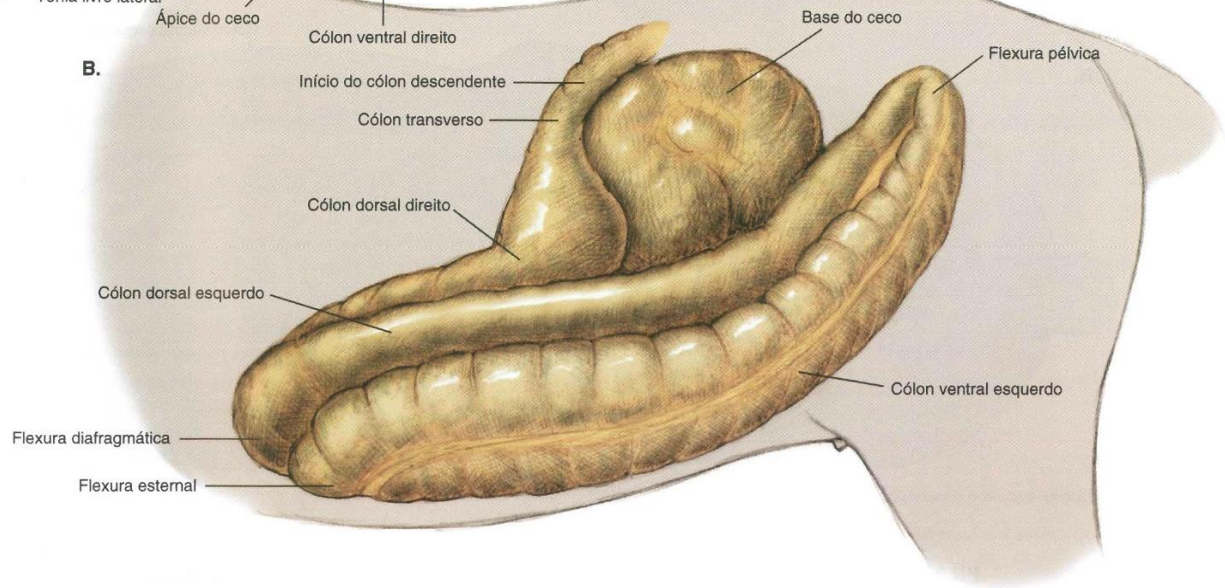




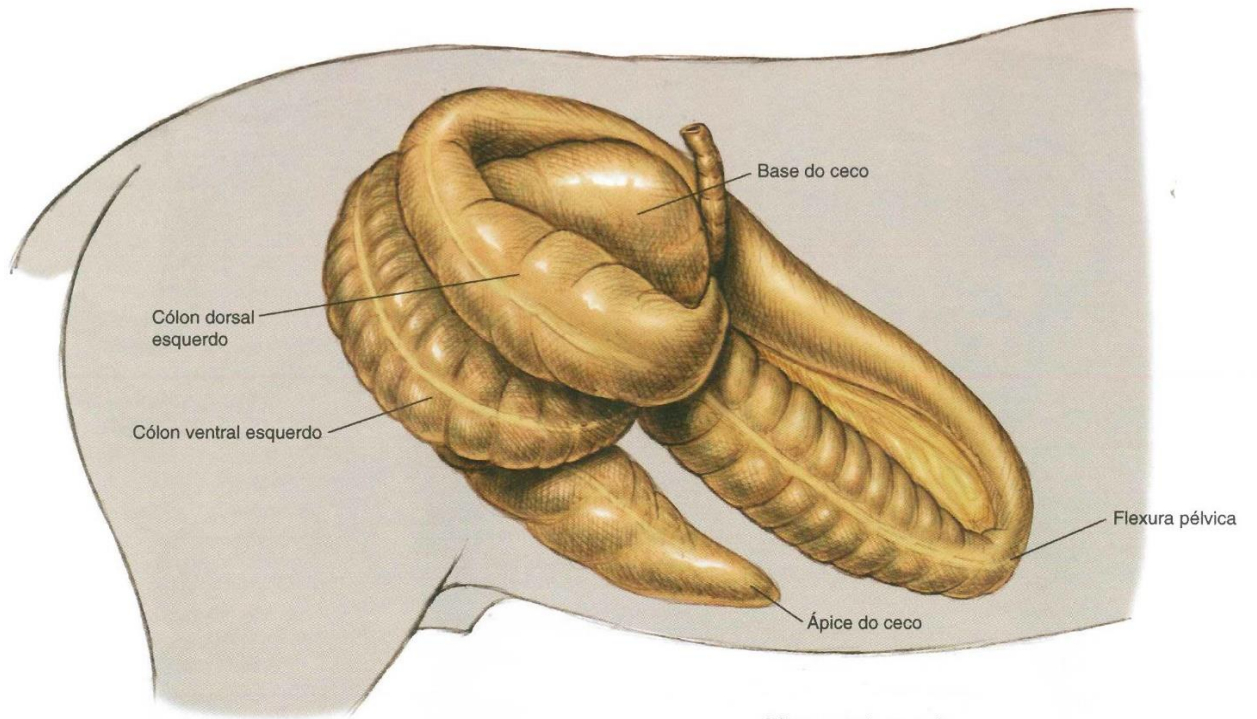
A.



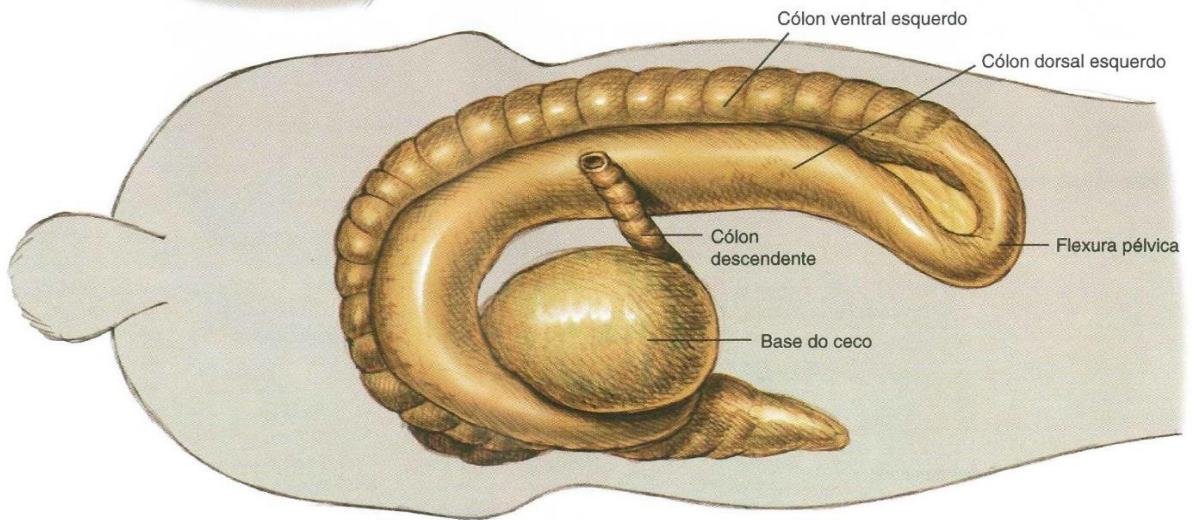
B.

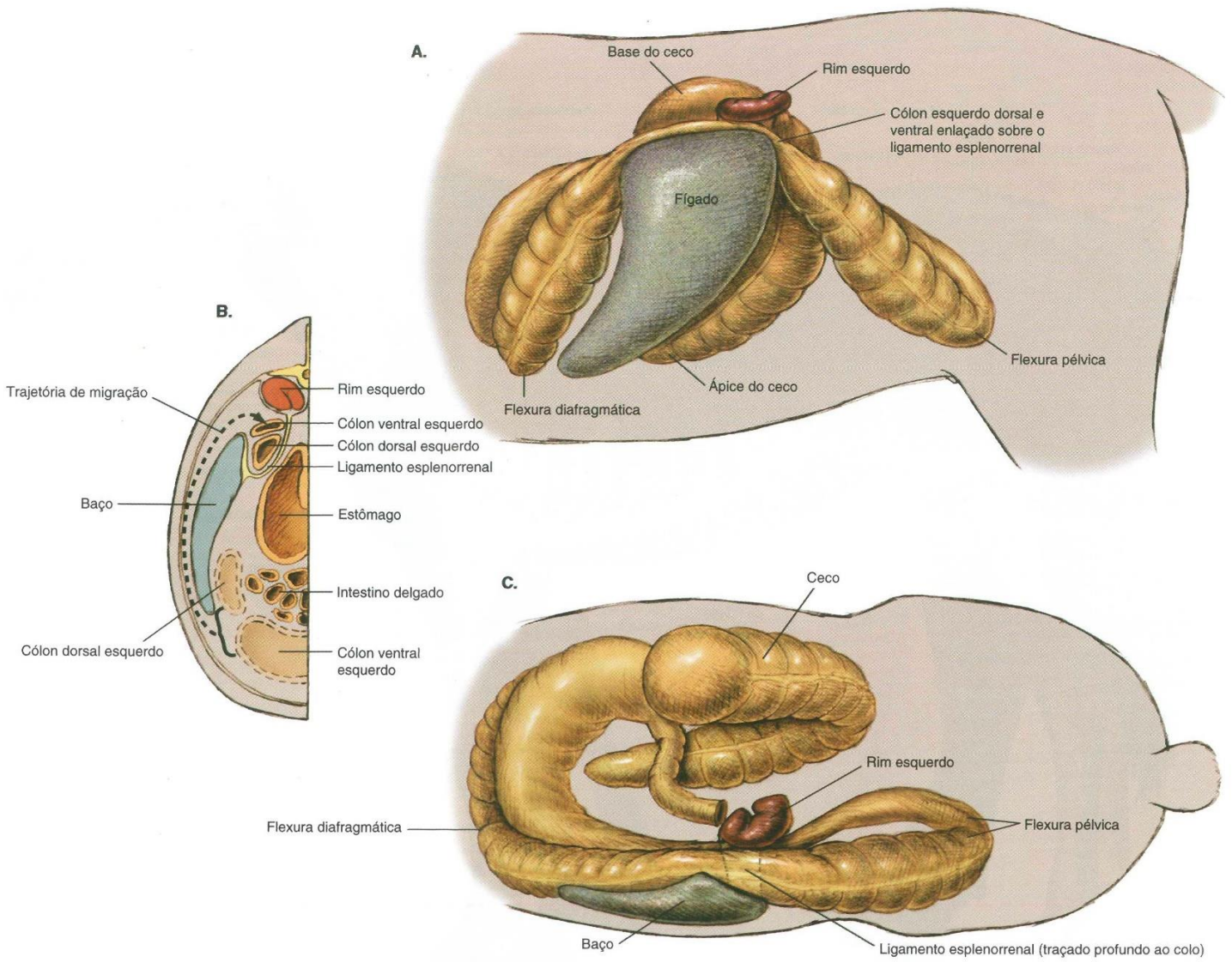


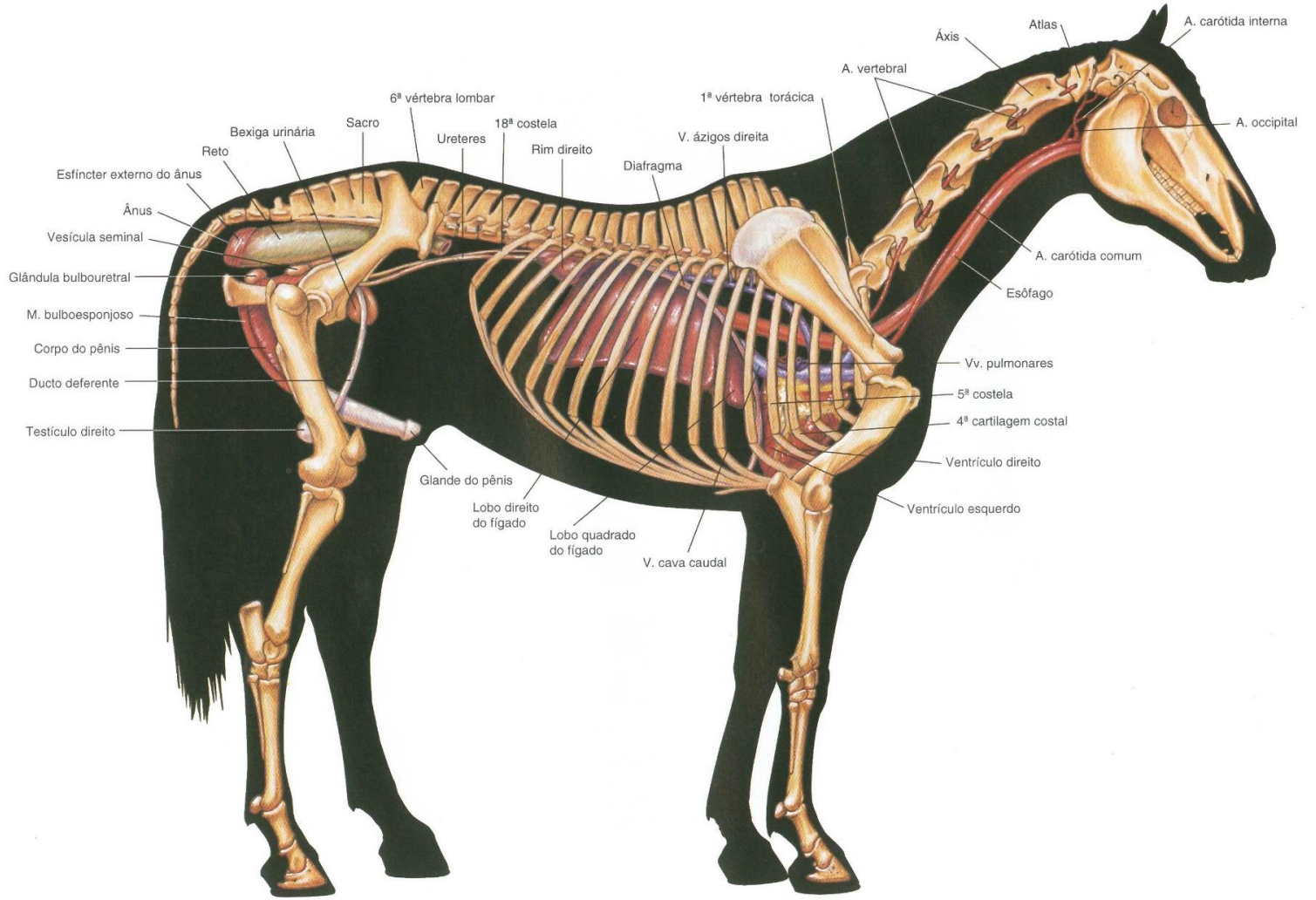
A.

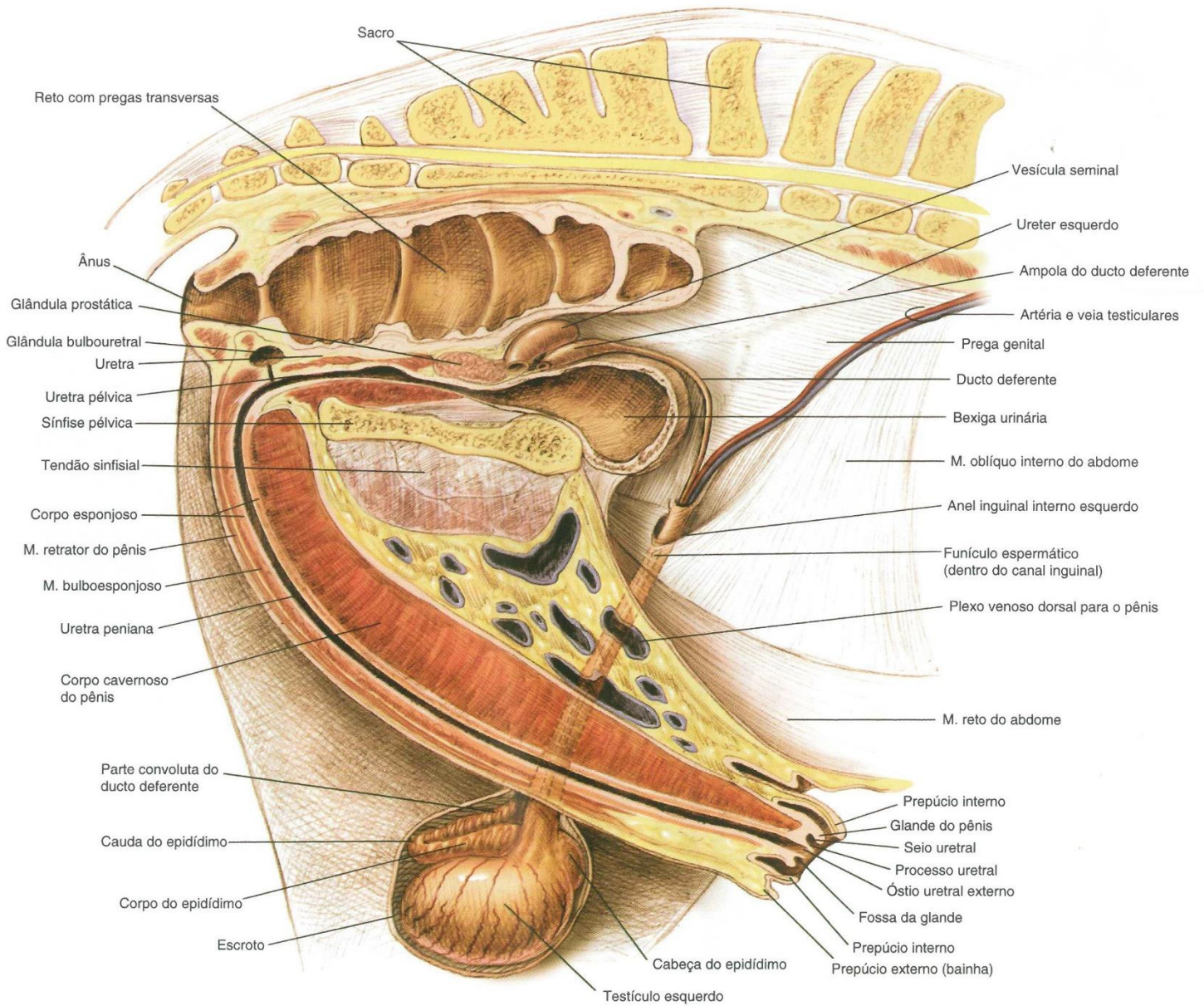


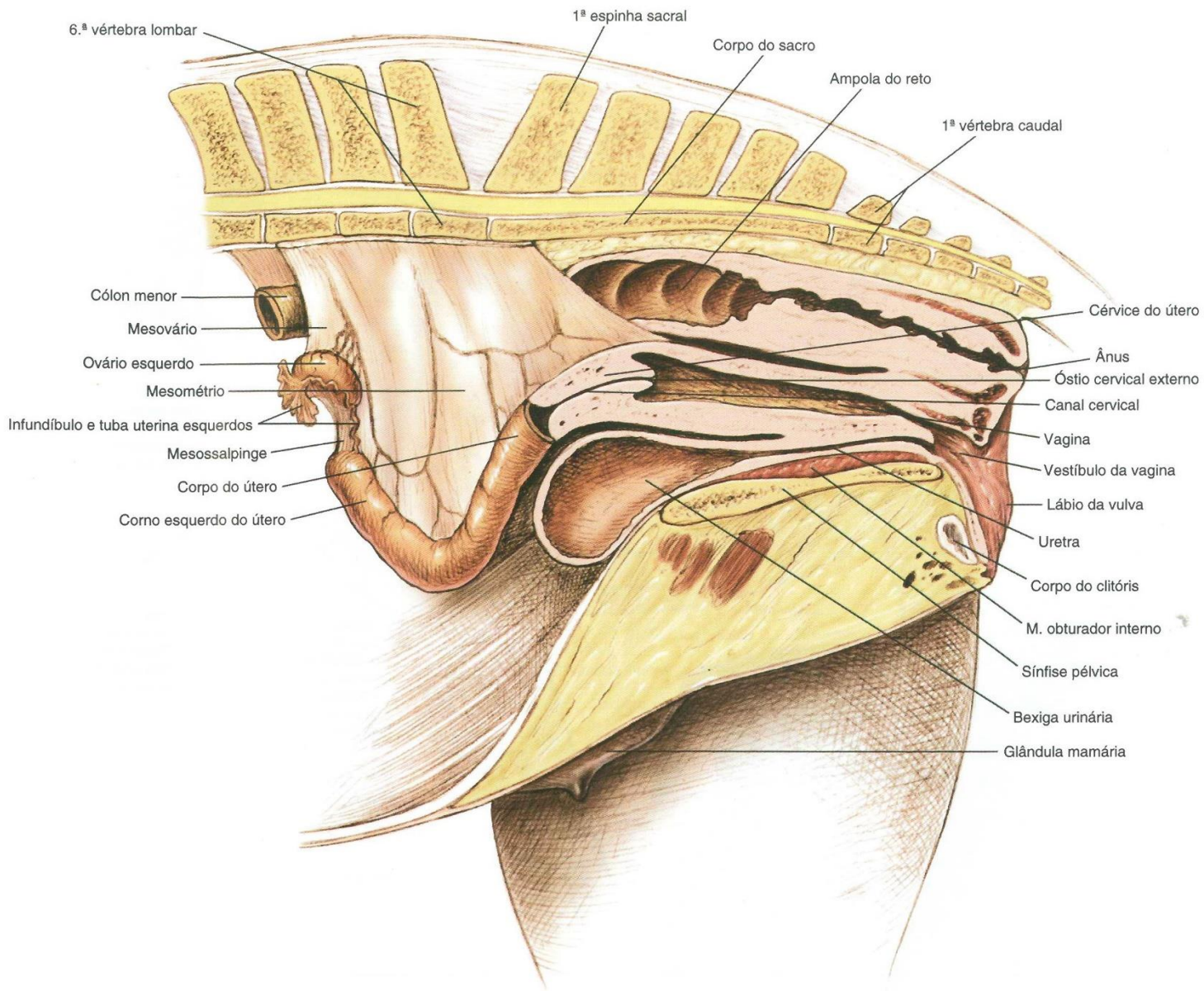
B.

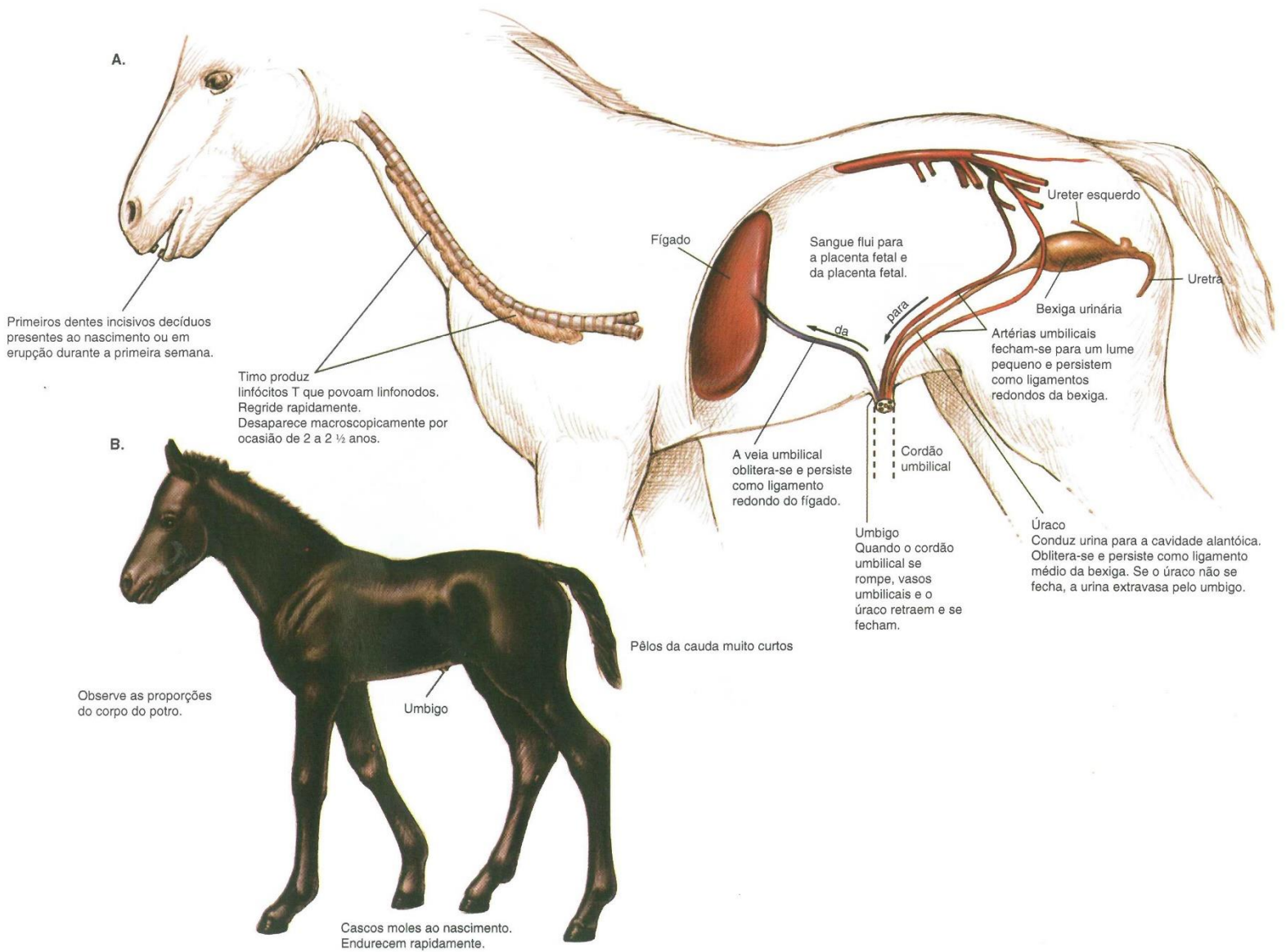


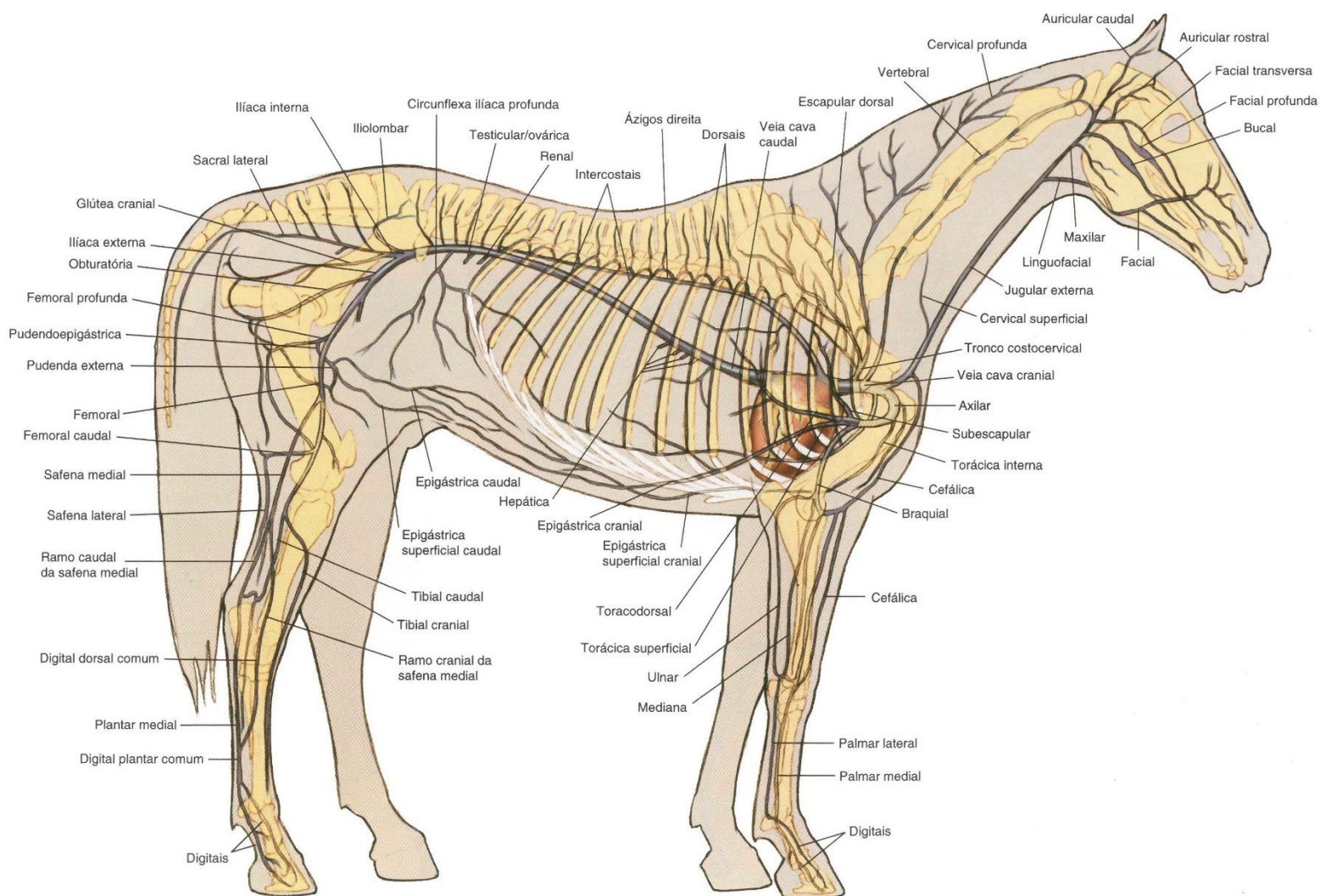


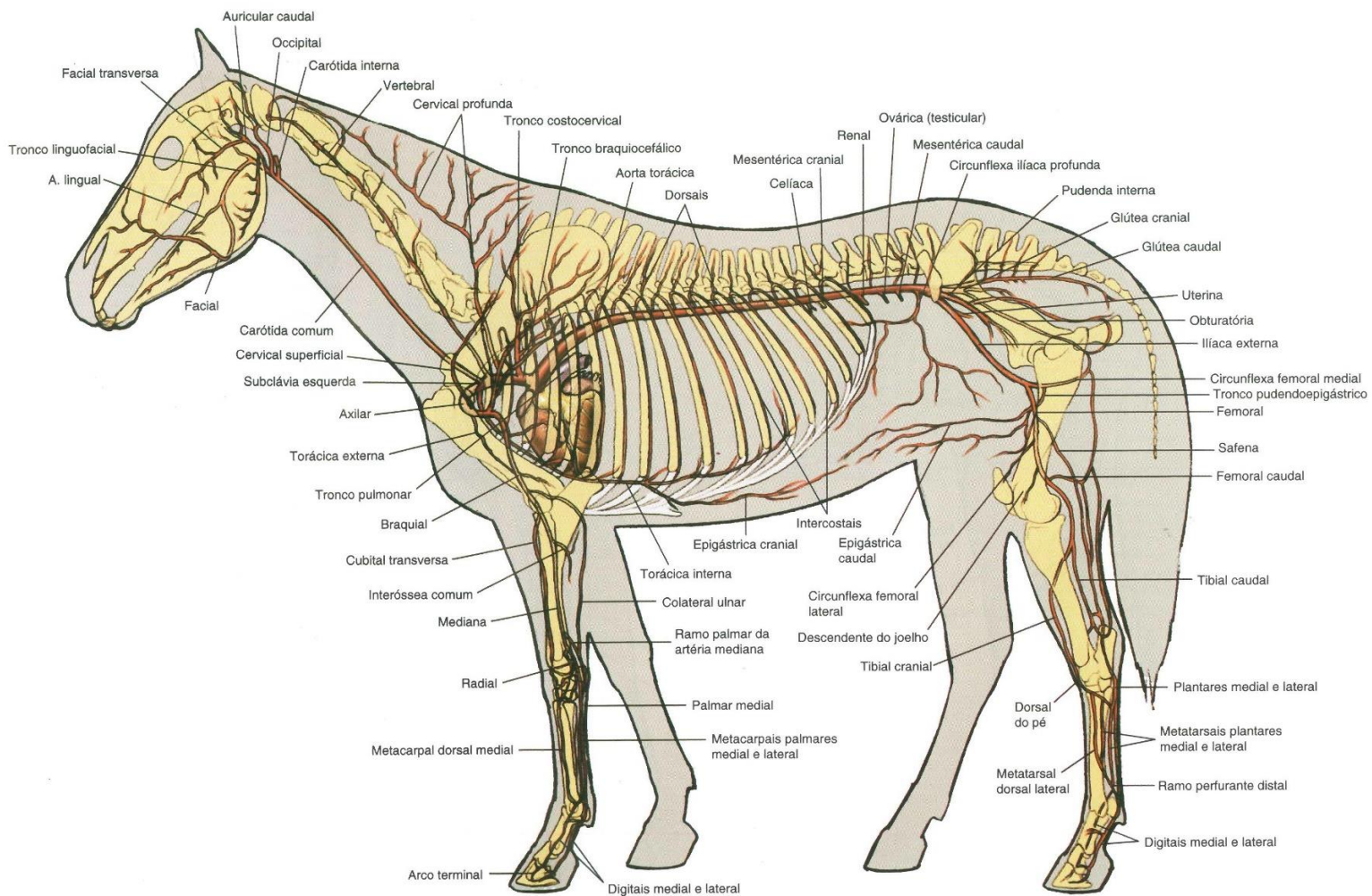


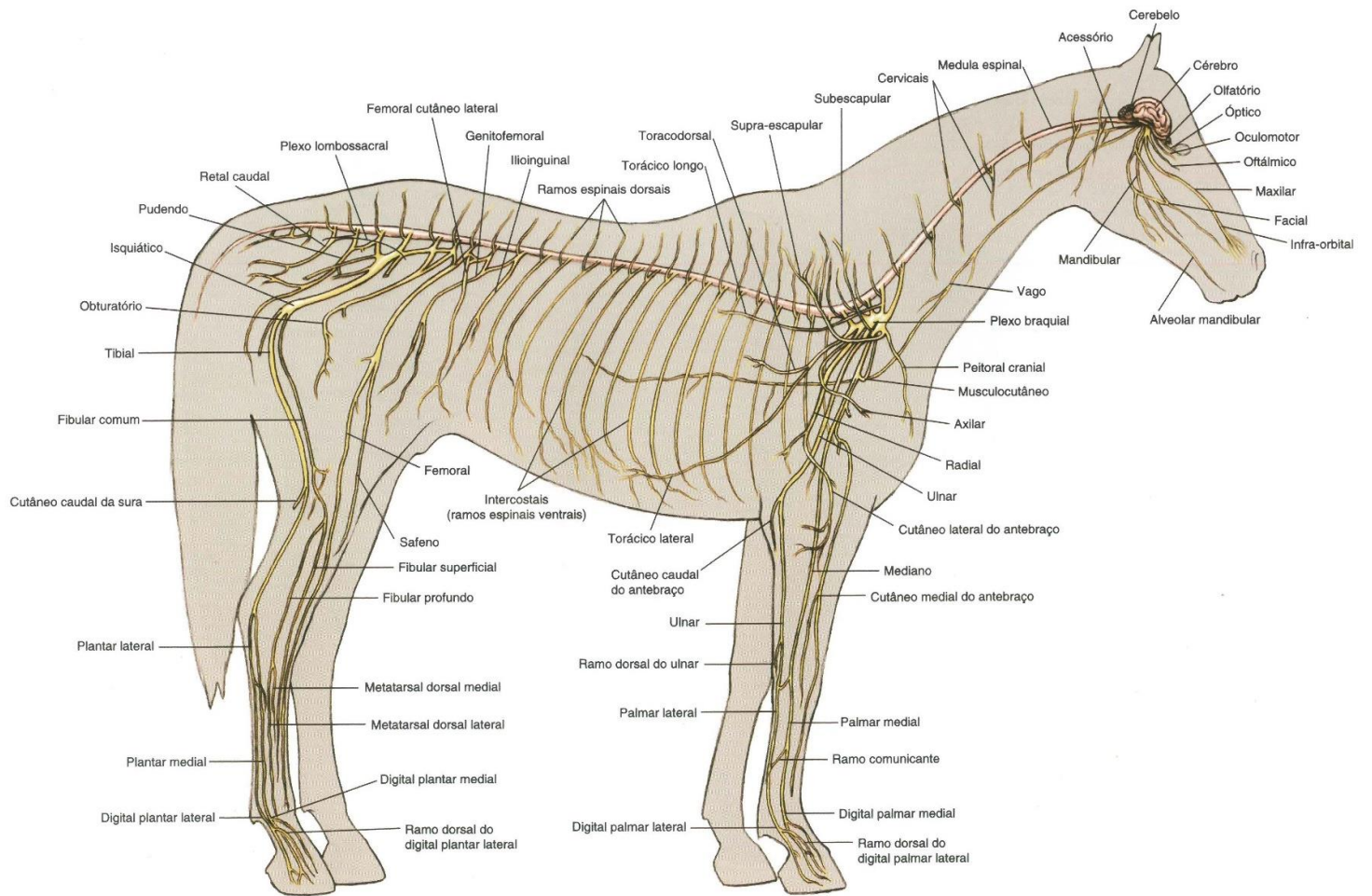


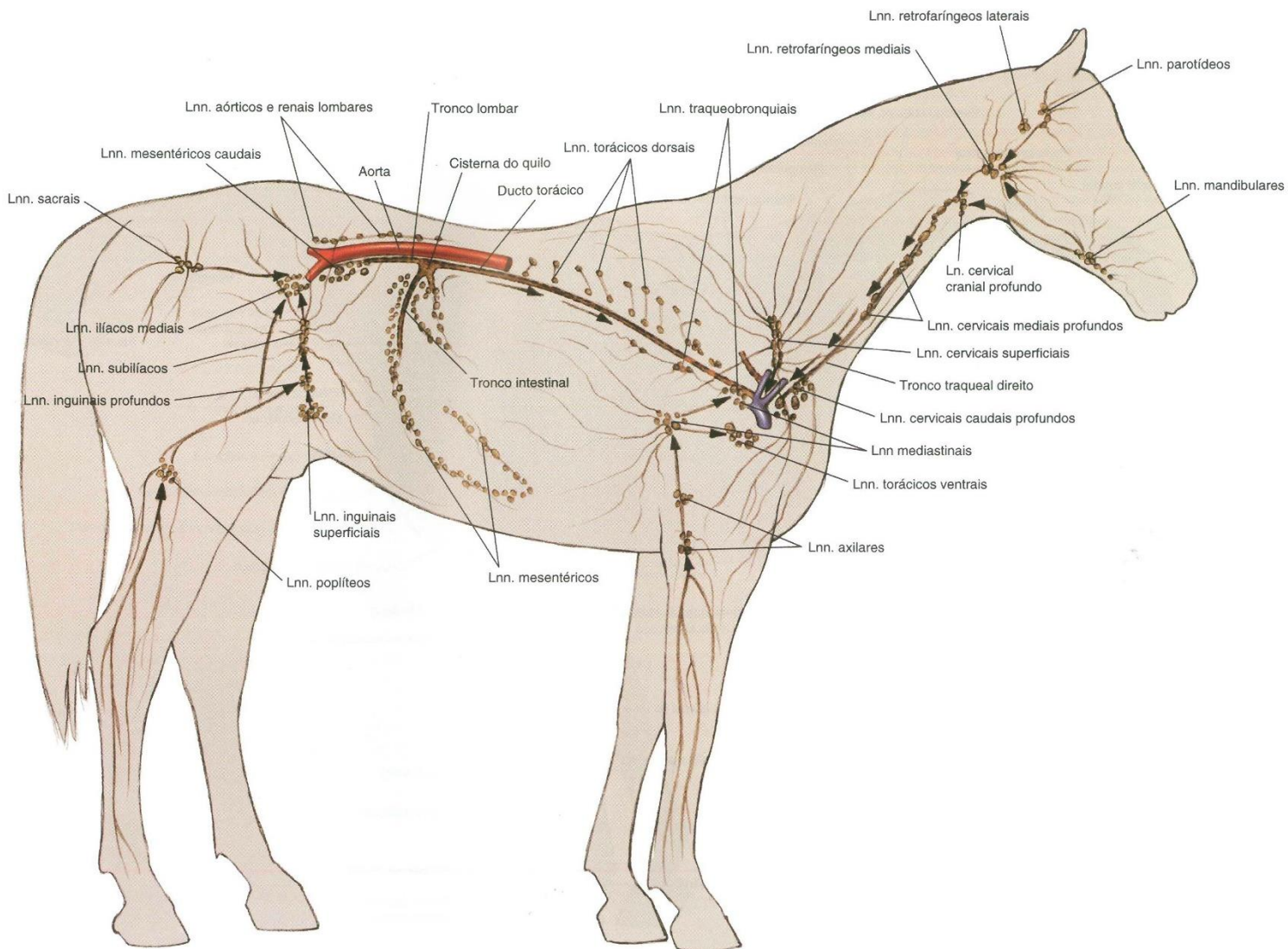


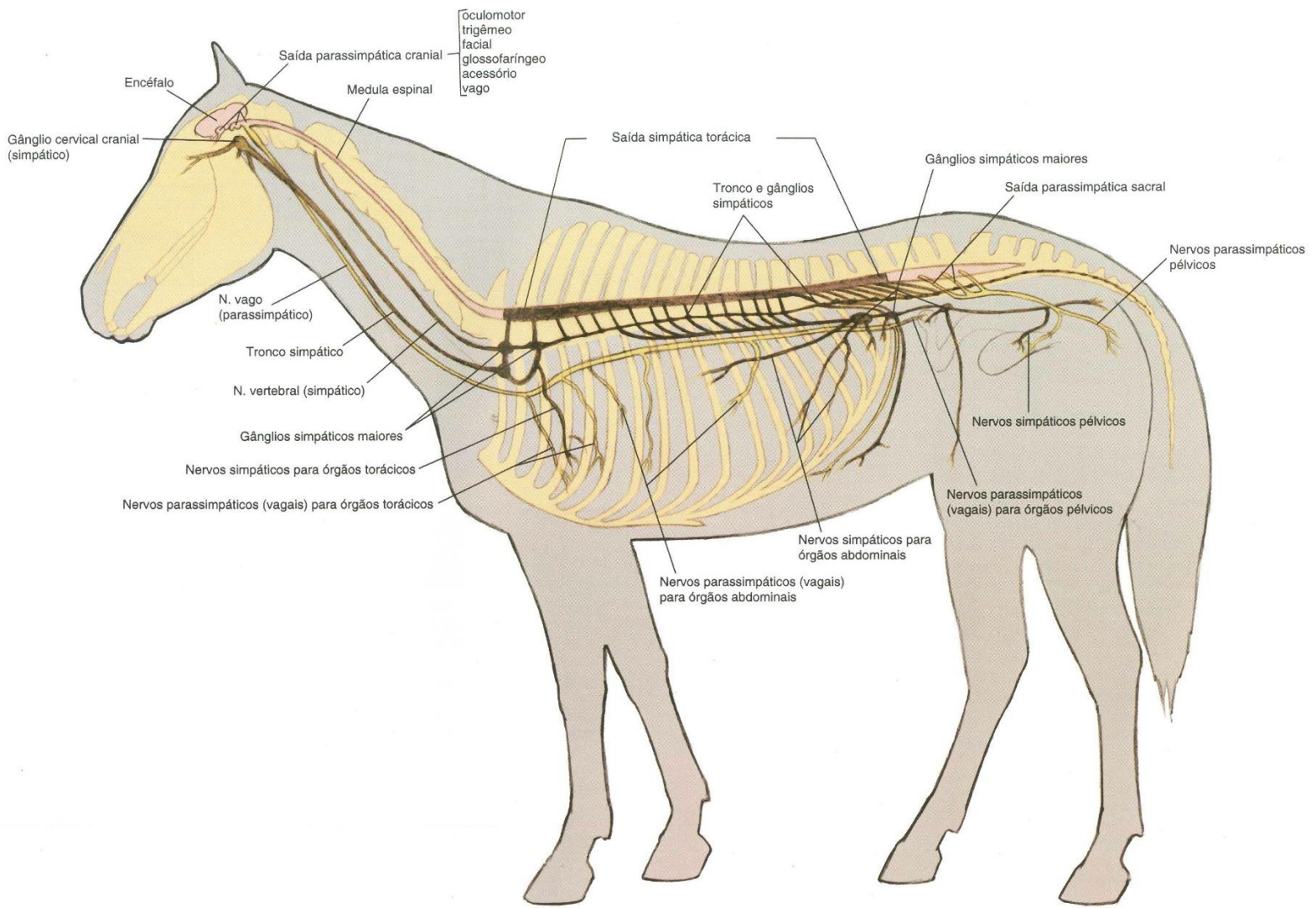












ATLAS
ANATOMIA
DE EQUINOS